

# Nursing Advancement Scholarship Program



ChristianaCare is committed to supporting the career growth and professional development of the nurse. By providing education and opportunities for leadership, ChristianaCare has created a work environment that fosters effective succession planning.

Provides 100% tuition support for degree program for all scholarship recipients



Open access for all eligible individuals pursuing RN-BSN and RN-MSN required for their role

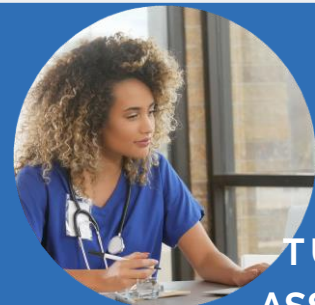
Provides post masters certification for an FNP practicing in acute care or behavioral health setting.



## RN-BSN



## RN-MSN



## TUITION ASSISTANCE

ChristianaCare is committed to creating a workforce that is predominately BSN prepared. Nurses working at ChristianaCare are encouraged to pursue a BSN degree.

All newly hired nurses are required to obtain a BSN within three years of hire.

The Nurse Advancement Scholarship Program provides tuition support for nurses who have been hired into or promoted to a role as a Nurse People Leader/Nurse Manager or as a Nursing Professional Development Specialist/Staff Education Manager.

Caregivers not participating in the scholarship program may utilize the tuition assistance program. This benefit provides reimbursement to the caregiver for tuition paid by the caregiver for courses required to complete a degree program related to their current job within ChristianaCare.